

# Safe Community Newsletter

Summer 2024 Issue #9

## Counter Terrorism (CT) Roles of Organisations

Combating terrorism does not rely solely on the efforts of law enforcement agencies. Property management personnel of public and private organisations also play crucial roles in the prevention of and response to terrorist or violent incidents. Below are the three main reasons :



They are most familiar with the terrain, location, environment and equipment, etc. of the premises under their charge, and can effectively provide real-time information and support



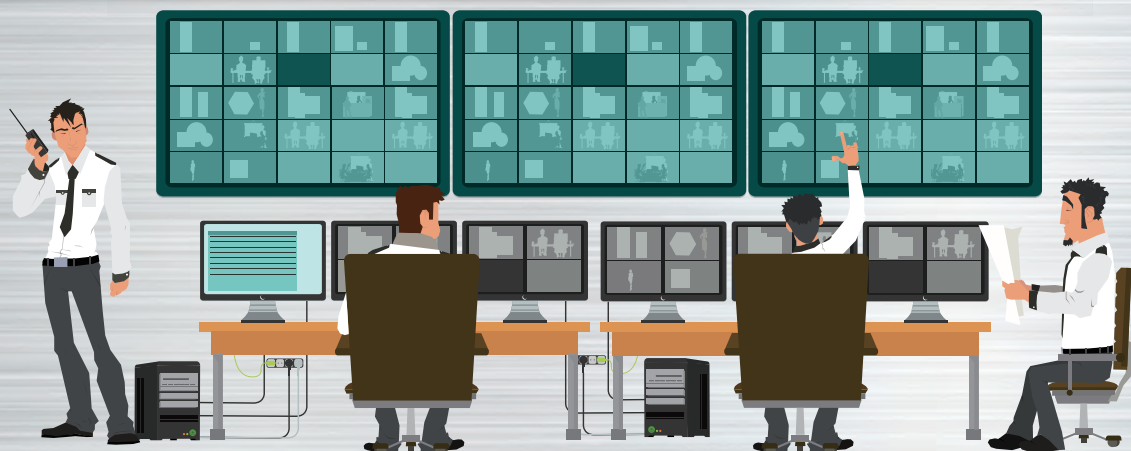
Their vigilance and responsiveness may help reducing their organisation's risk of being attacked



They may assist in strengthening their organisation's resilience and building a "Safe Community" together



# What are the roles of property management personnel?



## Role 1

## *Strengthen Prevention and Emergency Response Capability*

- ▶ Enhance security measures
  - Enhance access points and perimeter security (including CCTVs)
  - Take appropriate access control measures
  - Enhance patrol
- ▶ Strengthen awareness of identifying suspicious persons, objects and activities - "Spot and Report"
- ▶ Conduct regular checks/inspections on all security, firefighting systems and first aid equipment
- ▶ Conduct regular fire drills or emergency response exercises
- ▶ Be familiar with the environment and the relevant response plans of the premises under their charge, as well as the operation of firefighting equipment



有機會獲得獎金  
Chance for a Reward

**見疑即報**  
Spot and Report

SMS 短訊  
63-666-999  
WeChat 微信  
CT-hotline

微信小程序  
安全校園小程式  
免費熱線 999  
www.safeschool.gov.hk





## Role 2

# Enhance Awareness of Emergency Response Guidelines

In the event of a violent incident, remember to “Run, Hide, Report”.  
Where under safe condition, property management personnel should...



Assist others in leaving the scene using the quickest and safest route

Direct and assist others to take cover if unable to escape. Remember not to use any sound-emitting or luminous devices

Call 999 under safe condition. To facilitate follow-up actions by the Police, stay calm and report the following information accurately:



**WHEN** (「時」)

did the incident occur?



**WHERE** (「地」)

did it occur?



**WHO** (「人」)

were involved?



**WHAT** (「事」)

did you see?



**WHY** (「為甚麼」)

is it suspicious?

## Role 3

# Co-operate with the Police and Rescue Personnel

Property management personnel may take the following actions to facilitate rescue efforts:

- ▶ Keep emergency vehicular access clear
- ▶ Make sure that fire service inlets, sprinkler inlets, fire hydrants and their ground valves are free from obstruction
- ▶ Make available a comprehensive floor plan for the Police and rescue personnel
- ▶ Designate a contact person to communicate with the Police and rescue personnel





**Property management personnel should also get a good grasp of the "Three Basic Skills on Emergency Preparedness" to strengthen capabilities in dealing with emergencies or contingencies :**



## **Extinguish and Prevent Fire**

## **識滅火**

Learn how to use and maintain fire service installations and equipment correctly. In case of a fire, you can effectively control and even extinguish the fire at the initial stage. This will reduce human casualties and loss of property.



## **Self-help and Help Others**

## **識自救**

Learn the proper emergency self help knowledge and skills. In case of emergency, you can help yourself and, when safe to do so, help others.

## **Escape and Evacuate**

## **識逃生**

Always check out the escape routes and exit signs in the buildings and venues you visit. In case of a fire or other emergency, you can immediately follow the routes and signs and make a quick escape to safety.



# **Safe Community Hub**

## **安全社區體驗館**



### **Visit to the Hub**

#### **Location**

25/F, Revenue Tower,  
5 Gloucester Road, Wan Chai

#### **Admission Fee**

Free

#### **Group**

Schools, community groups or organisations are welcome to make group reservations

#### **Individual**

Members of the public can make reservations for designated time slots  
For details, please visit [www.ictu.gov.hk](http://www.ictu.gov.hk)

**Enquiry : 3660 0548**

### **Visitors must make reservations**



**Scan the QR Code to enter the reservation system**

Reservation can be made via the "Safe Community" WeChat Mini Programme (「安全社區小程序」)